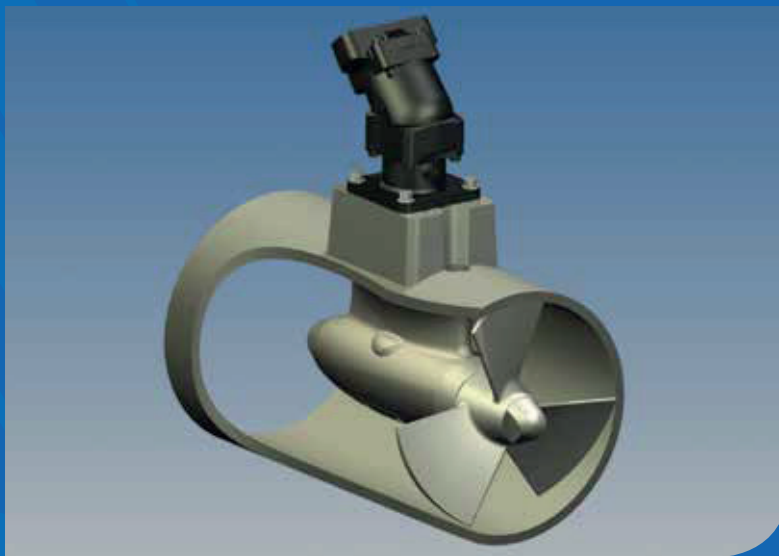


## Hercules Hydraulics Aluminium Lightweight Bow Thrusters

**Hercules Hydraulics Heavy Duty Bow Thrusters are designed for Workboats and Continuous duty.**



The high strength, lightweight construction is on average 50% lighter than competitor bronze manufactured units of the same size.

With long life and simple maintenance in mind, Hercules Bow Thrusters feature a stainless steel shaft, spiral bevel gears, and a standard SAE flanged interface for hydraulic motors. This enables the installers to integrate the Thruster into existing hydraulic systems.

Designed around Class Rules these Bow Thrusters are fully encapsulated and both the HHBT40 and HHBT60 feature a tunnel constructed from Class Approved extruded 5083 grade aluminium, composite E-glass or mild steel. The tunnel may be cut to any length.

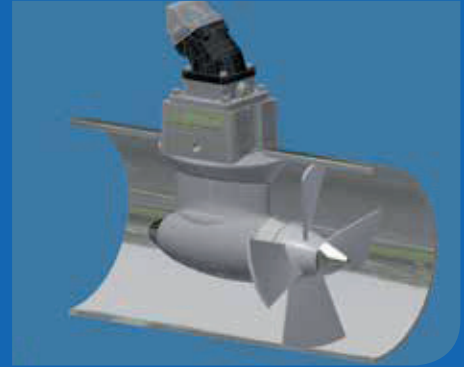
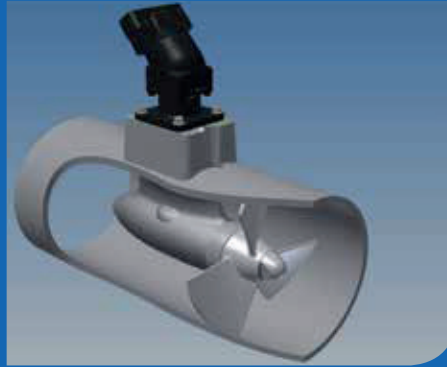
The complete units are manufactured by Hercules Hydraulics in Devon and may be powered by a hydraulic system also designed, supplied and installed by the Company.

## Design Criteria

- Designed for workboats and continuous duty
- Designed for Manoeuvring or Positioning
- Designed in accordance with Class Rules for transverse thrusters
- Designed for continuous heavy duty use
- Internal spiral bevel gear for high efficiency
- Bent axis, high efficiency, high pressure hydraulic motors
- Cast Aluminium Alloy Grade LM6 drive pod, with oil lubrication.
- Encapsulated Pod, Tunnel and Tube design makes it fail safe and Leak free
- Aluminium Alloy propeller
- Inbuilt replaceable anodes
- Stainless steel drive shaft, with oil lubricated bearing assembly, via 8-litre oil tank mounted above the water line.
- 3 tunnel types for HHBT40 & HHBT60 – Extruded 5083 Aluminium Alloy, Composite E-glass, Mild Steel
- The Extruded 5083 Aluminium Alloy tube is provided with full Class Approved 3•2 Material Certification
- Tunnel length, where supplied, can be cut to any length to suit the installation

For further information please visit [www.herculeshydraulics.co.uk](http://www.herculeshydraulics.co.uk) or call **01803 666623**

# Specifications



Model	HHBT 35	HHBT 40	HHBT 45
Nominal Thrust	385KG	440KG	495KG
Hydraulic Power at the Propeller	35HP	40HP	45HP
Typical Effective Hydraulic Pressure	245 BAR	265 BAR	285 BAR
Typical Effective Hydraulic Flow	64 LPM	68 LPM	71 LPM
Prop Speed	1350 RPM	1450 RPM	1540 RPM
Tunnel Diameter	380mm x 15mm	380mm x 15mm	380mm x 15mm
Weight per Metre of Aluminium Tunnel	46 kg / mtr	46 kg / mtr	46 kg / mtr
Weight of Thruster, Motor and Propeller	45 kg	45 kg	45 kg

*Composite E-glass and mild steel tube is available*

Model	HHBT 55	HHBT 60	HHBT 65
Nominal Thrust	630KG	690KG	750KG
Hydraulic Power at the Propeller	55HP	60HP	65HP
Typical Effective Hydraulic Pressure	245 BAR	255 BAR	270 BAR
Typical Effective Hydraulic Flow	100 LPM	105 LPM	109 LPM
Prop Speed	1190 RPM	1250 RPM	1300 RPM
Tunnel Diameter	480mm x 15mm	480mm x 15mm	480mm x 15mm
Weight per Metre of Aluminium Tunnel	62 kg / mtr	62 kg / mtr	62 kg / mtr
Weight of Thruster, Motor and Propeller	60 kg	60 kg	60 kg

*Composite E-glass and mild steel tube is available*

Model	HHBT 85	HHBT 90	HHBT 95
Nominal Thrust	1085KG	1150KG	1200KG
Hydraulic Power at the Propeller	85HP	90HP	95HP
Typical Effective Hydraulic Pressure	240 BAR	255 BAR	270 BAR
Typical Effective Hydraulic Flow	160 LPM	160 LPM	160 LPM
Prop Speed	1000 RPM	1000 RPM	1000 RPM
Tunnel Diameter	580mm x 15mm	580mm x 15mm	580mm x 15mm
Weight per Metre of Aluminium Tunnel	Tunnel Not Supplied with Thruster		

For further information please visit [www.herculeshydraulics.co.uk](http://www.herculeshydraulics.co.uk) or call **01803 666623**